



THE CLOVER CONNECTION



The official monthly newsletter of Wyandotte County 4-H

By Casey Ling, 4-H Youth Development Extension Agent

October Dates to Remember

Sept 21-30- 4-H Online Shutdown

October 1- New 4-H Year!

October 1- Kansas Farm Bureau and Kansas 4-H Photography Contest entry deadline

Oct- 1-7- National 4-H Week

October 2- Record books due

October 7-8- 48 Hours of 4-H (Kitchen Restore donations)

In this month's Issue:

- Congratulations to our KSF Static Entry Contestants
- New 4-H Year & 48 Hours of 4-H
- Kitchen Restore Project (48 4-H)
- Kansas 4-H Events Schedule 23-24
- Updated 4-H Project Names
- 4-H Online Shutdown Info
- Record Books
- Events and Contests
 - Dog Conference
 - Kansas Youth Leadership Forum and 4-H Volunteer Forum
 - Ceramics and Pottery Class
 - Kansas Farm Bureau and Kansas 4-H Photography Contest



Congratulations to our Kansas State Fair Static Entry Contestants!!!

Ellen Geist-

Fiber Arts Macrame; Cowboy Hat Holder-Blue
Food-Nutrition; Non-perishable food product 9-11; Clover Rolls- Blue
Photography; Color Photos 4-7 Years in Project- Blue
Visual Arts; General crafts- Revers Tie Dye Shirt- Purple
Wood Work; Jesus's Tomb Easter Decoration- Red

Andrew Streit

Photography; Color Photos- 8 years or more- Blue
Photography; Black and White Photos 8 years in project- Blue
Visual Arts; Leather and Jewelry- Blue

Grace Streit

Photography; Black and white photos 3 years or less- Blue
Visual arts; Fine Arts; Layered Scrapbook Paper Cat and Deer- Blue



Congratulations to our Kansas State Fair Static Entry Contestants!

Michael Streit

Photography: Color Photos 4-7 years in project- Purple

Ethan Strong

Photography; Color photos 4-7 years in project- Blue

Amber Young

Fiber Arts, Needle Arts; Counted Cross-stitch picture
“Together anything is possible”- Red

Ruby Young

Fiber arts; Needle Arts; Embroidery- “Home Sweet Home”- Blue
Visual arts; Clay and Ceramics- Ceramic Angel “Good Will Toward Men”- Blue

Amri Eischen

Photography; Color photos 4-7 years- Blue



Welcome to the New 4-H Year!

The New 4-H Year is here!

The 4-H Year will run from October 1, 2023 to September 30, 2024.

Reminders:

- Be sure to complete your 4-H Online enrollment after
- October 1st.
- The one time \$15 enrollment fee is due to 4-H Online by November 15.
- All enrolled 4-Hers need to also enroll in at least one project area.
- Additional projects can be added at any time through the 4-H Year up until May 1st.



48 Hours of 4-H

What better way to kick off our new 4-H year than with a 48 hours of 4-H service project!

48 Hours of 4-H is coming up on October 7-8th, right after National 4-H Week! 48 Hours of 4-H is a time for 4-Hers to give back to their communities through a community service project.

48 Hours of 4-H is open to everyone in the community, 4-H members, 4-H alumni, parents, volunteers, community organizations, and friends. It is one weekend for everyone to serve the community together and "Make the Best Better!"

These projects can be done as individuals or groups (clubs, extension units, families, etc.) No matter what project you choose, this is one weekend to make a difference. The project does not need to last all weekend — any project during these 48 hours is great. Can't do your project that weekend? Schedule a project any time in October.



Kitchen Restore Project

Do you or your club need an idea for your 48 Hours of 4-H community service project? Check out the Kitchen Restore Project!

The Kitchen Restore Project is a partnership between the Kansas City Kansas Community College and K-State Research and Extension Wyandotte County to provide basic kitchen items to families in need. Donations of gently used or new kitchen items can be dropped off at the WyCo Extension Office. This is a great service project to help those in need while also clearing out clutter in your kitchen!

KITCHEN RESTORE PROJECT

K-State Research and Extension Wyandotte County is partnering with Kansas City Kansas Community College to create The Kitchen Restore Project. The Kitchen Restore Project strives to improve the quality of life of Wyandotte County residents through the provision of basic kitchen items to those with minimal or no resources for cooking.

DONATIONS ARE NEEDED!

Check out our website to volunteer or donate at wyandotte.k-state.edu/program_areas/health-nutrition/kitchenrestoreproject

913-299-9300

K-STATE
Research and Extension
Master Food Volunteer
Wyandotte County

100
YEARS
1917-2017

Kansas City Kansas
Community College

K-State Research and Extension is committed to providing equal opportunity for participation in all programs, services and activities. Program information may be available in languages other than English. Reasonable accommodations for persons with disabilities, including alternative means for communication (e.g., Braille, large print, audio tape, and American Sign Language) may be requested by contacting the event contact Jo McLeland two weeks prior to the start of the event (insert deadline date) at (913-299-9300 or jo@ksu.edu). Requests received after this date will be honored when it is feasible to do so. Language access services, such as interpretation or translation of vital information will be provided free of charge to limited English proficient individuals upon request.

23-24 Schedule for State Wide 4-H Events



| | |
|----------------|--|
| October 1 | New 4-H Year begins |
| October 1-7 | National 4-H Week |
| October 7-8 | 48 Hours of 4-H Service Challenge |
| October 7 | Kansas 4-H Small-Bore and Muzzleloading Matches |
| October 14-15 | Kansas 4-H Shotgun Matches |
| October 21-22 | Kansas 4-H Shooting Sports Leader Certification, Cimarron |
| October 21-22 | Kansas 4-H Dog Conference, Rock Springs Ranch |
| October 26 | Kansas 4-H Photography Shutterbug Event, Hays |
| November 2 | Kansas 4-H Photography Shutterbug Event, Oskaloosa |
| November 18-19 | Kansas 4-H Youth Leadership Forum, Rock Springs Ranch |
| November 18-19 | Kansas Association of 4-H Volunteers Forum, Rock Springs Ranch |
| November 24-28 | National 4-H Congress, Atlanta, GA |
| January 26-28 | Kansas 4-H Dog Judges Training, Leavenworth |
| January 27 | Kansas 4-H Horse Panorama |
| February 18-19 | Kansas 4-H Citizenship In Action, Topeka |
| March or April | Kansas 4-H Shooting Sports Spring State Match |
| April 19-24 | National 4-H Conference, Washington D.C. |
| June 5-7 | Kansas 4-H Discovery Days, Kansas State University |
| June/July | 4-H Camp, Rock Springs Ranch |
| June TBA | Kansas 4-H Geology Field Trip |
| June 14-15 | Kansas 4-H Insect Spectacular |
| August TBA | Kansas 4-H Wheat Expo |
| August 10 | Kansas 4-H Horticulture Judging Contest |
| August TBA | Kansas 4-H Livestock Sweepstakes |
| September 6-15 | Kansas State Fair, Hutchinson |

**Dates subject to change.* Please visit with your local K-State Research and Extension Office or visit www.Kansas4-H.org for event details and registration information.

K·STATE
Research and Extension



Kansas State University Agricultural Experiment Station and Cooperative Extension Service.
K-State Research and Extension is an equal opportunity provider and employer.

Updated Project Names

K-State has updated the list of projects and names of project that are offered by Kansas 4-H. Most of the projects will remain the same with slightly different names. These changes will be reflected in 4-H Online and at the county and state fair.



Beef
Dairy Cattle
Dairy Goats
Dog
Horse
Meat Goats
Pets
Poultry
Rabbits
Sheep
Swine
Veterinary Science

Sewing & Textile Design
Shopping in Style
Family Studies
Fiber Arts
Foods & Nutrition
Health & Wellness
Interior Design & Architecture

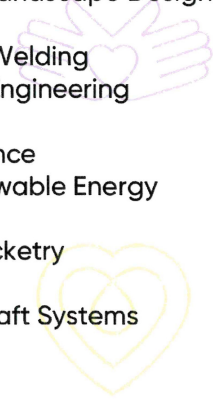
Environmental Science
Geology
Shooting Sports
Wildlife

Communications
Performing Arts
Photography
Visual Arts

Civic Engagement
Leadership
Reading Adventures
Self-Determined

Entomology
Agronomy
Forestry
Horticulture & Landscape Design

Ag Mechanics Welding
Building Block Engineering
Astronomy
Computer Science
Electric & Renewable Energy
Robotics
Aerospace/Rocketry
Small Engines
Uncrewed Aircraft Systems
Woodworking



PREVIOUS PROJECT LISTING

Beef
Dairy, Cattle
Dairy, Goats
Dog Care & Training
Horse
Meat Goats
Pets (including Cats)
Poultry
Rabbits
Sheep
Swine
Veterinary Science

Communications
Performing Arts
Photography
Visual Arts

Clothing & Textiles- Construction
Clothing & Textiles- Buymanship
Family Studies
Fiber Arts
Foods & Nutrition
Health & Wellness
Home Environment

Environment Science
Geology
Shooting Sports
Wildlife

Citizenship (Civic Engagement)
Leadership
Reading
Self-Determined

Entomology
Plant Science
Plant Science- Field Crops
Plant Science- Forestry
Plant Science- Horticulture

STEM - Ag Mechanics
STEM - Architectural Block Construction
STEM - Astronomy
STEM - Computer Science
STEM - Energy Management
STEM - Robotics
STEM- Aerospace/Rocketry
STEM - Small Engines
STEM - UAS
Woodworking



4-H Online Shutdown

As the 22-23 4-H year comes to an end and we look forward to the new 23-24 year, K-State Extension will be doing some "behind the scenes" work on our online platform 4Honline.com.

4-H Online will be shutdown and unavailable from **September 21 to September 30 at midnight.**

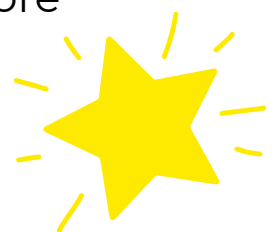
4-H Online will reopen and be available for enrollment on **October 1**- the start of the new 2023-2024 4-H year.

During this time early enrollment/re-enrollment is not possible. Even if you are able to get into the website during the shut down time period, no information entered will be saved. Please wait until **October 1** to do any enrollment.

If you are assisting a new family or 4-Her, please have them wait until **October 1** to create their new account. If they create a new account before **October 1**, their account will be deleted at the state level.



Please keep these dates in mind while working or record books. You will not be able to access any records kept on 4-H Online the week before record books are due.



Record Books

It's that time of year to start putting together your record books! All of the information about creating and submitting your record book is available [here](#).

You can also go online to the WyCo Extension website under the 4-H Youth Development tab, then go to Record Keeping on the left side of the screen.

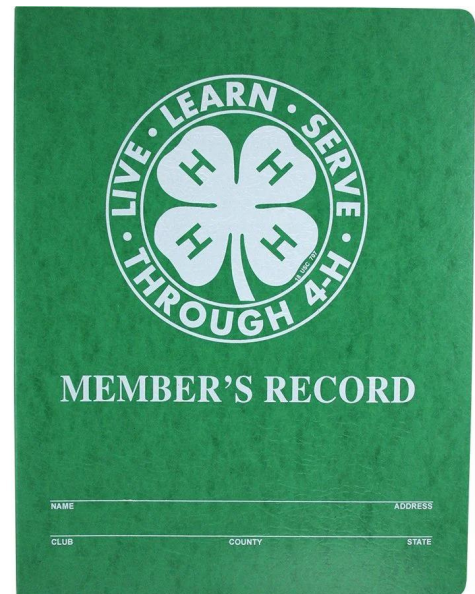
Participation with 4-H Record Books are a great way to practice record keeping, written communication, as well as compile information for scholarships and college or job applications.

The Extension office is giving away FIVE (5) of the record book covers to 4-Hers!

Edit: There are 3 left!!!



Record Books will be due
Monday October 2, 2023



If you need extra pictures for your record book- check out the free online portfolio our Communications Manager, Rebekah Branch, created of all the photos she took at this year's County Fair <https://www.flickr.com/photos/wycoksre/page1>

Events and Contests

State 4-H Dog Conference Oct 21-22

The Dog Conference registration will open September 15. The theme of the 4H event is "Dogz of Oz". The sessions will be about disaster preparedness with your dog, training and starting Rally O in your area, Quiz Bowl, youth presentations, and lots of fun with your dog at Rock Springs Ranch near Junction City.



Kansas Youth Leadership Forum and 4-H Volunteer Forum

LIGHTS, CAMERA, ACTION and Leadership is the theme for the 2023 Kansas Youth Leadership Forum!

Saturday and Sunday, November 18-19 at Rock Springs Ranch. This forum is for youth 14-18 years of age before January 1, 2024.

The Kansas 4-H Volunteer Forum will be held at the same time. This will be a great opportunity for volunteers to learn from each other and get excited about trying some new things in their 4-H Clubs.

Registration will be due: Monday, October 16, 2023



Ceramics and Pottery Class

Have you ever been interested in pottery or ceramics?

Did you know that 4-Hers can enter their clay and ceramic creations in the WyCo Fair under Visual Arts?

Did you know that your clay and ceramics WyCo fair entry could be selected to go to the Kansas State Fair?

Members of the Nearman 4-H Club are attending the Eisenhower Youth Ceramics class this fall. Classes are open to all youth and are 4-H friendly.

YOUTH CERAMICS CLASS

EVERY TUESDAY FROM 6PM-7:30PM
STARTING SEPT 19 THROUGH DEC 26

To Register or for more information
call 913-573-8327

Eisenhower Park **Class Fee: \$20**
2801 N 72nd St Kansas City, KS 66109

K-STATE
Research and Extension
Wyandotte County

K-State Research and Extension is committed to providing equal opportunity for participation in all programs, services and activities. Program information may be available in languages other than English. Reasonable accommodations for persons with disabilities, including alternative means for communication (e.g., Braille, large print, audio tape, and American Sign Language) may be requested by contacting the event contact Casey Lind two weeks prior to the start of the event (2 weeks before event) at (cslind@ksu.edu or 913-799-9300). Requests received after this date will be honored when it is feasible to do so. Language access services, such as interpretation or translation of vital information will be provided free of charge to limited English proficient individuals upon request.

Photography Contest

Attention all aspiring Kansas 4-H photographers! Kansas Farm Bureau and Kansas 4-H are excited to offer a photography contest exclusively for 4-H members! This is your chance to showcase your skills in capturing agriculture in action throughout Kansas.

If you are passionate about agriculture and have a creative eye, this is your chance to showcase your skills and capture the beauty of our state through your lens. With amazing prizes up for grabs, it's time to let your creativity flow!

Don't miss this chance to shine! Head over to www.kfb.org/4hphoto for more information on how to enter.

4-Hers can enter up to 4 photos

Entry Deadline is October 1, 2023



Kansas 4-H and Kansas Farm Bureau
**PHOTOGRAPHY
CONTEST**
CHANCE TO WIN UP TO \$50 AND BE FEATURED
IN KANSAS LIVING MAGAZINE!



Have a star 4-Her that deserves recognition?

Have a picture from a project meeting or 4-H event that you would like to share with the community?

Let us know! Email csling@ksu.edu



To make the best better!



K-State Research and Extension is committed to providing equal opportunity for participation in all programs, services and activities. Program information may be available in languages other than English. Reasonable accommodations for persons with disabilities, including alternative means for communication (e.g., Braille, large print, audio tape, and American Sign Language) may be requested by contacting the event contact Casey Ling two weeks prior to the start of the event (2 weeks before event) at (csling@ksu.edu or 913-299-9300). Requests received after this date will be honored when it is feasible to do so. Language access services, such as interpretation or translation of vital information will be provided free of charge to limited English proficient individuals upon request.